

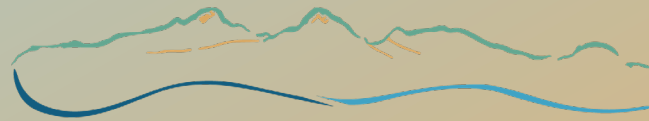
WELCOME!

Copper River Valley - Regional Planning Organization

Long-Range Transportation Plan

Virtual Public Meeting

Thursday, January 8, 2026



COPPER VALLEY DEVELOPMENT ASSOCIATION

www.coppervalley.org/transportation/lrtp

Agenda

- CRV-RPO overview
- Long-Range Transportation Plan overview
- Discussion
- What's next



WHAT is CRV-RPO?

Copper River Valley – Regional Planning Organization

- Established August 2022 with DOT&PF
- Committee of the Copper Valley Development Association
- Helps plan the region's transportation investments
- Communicates priorities directly to Alaska DOT&PF
- Homegrown, local organization comprised of long-time local residents, business owners, and other local representatives
- CVDA was established in 1989



Relationship with DOT&PF



- Metropolitan Planning Organizations
- Unorganized borough doesn't have same line of communication
- Purpose is to communicate to DOT&PF about the region's priorities
- Respecting lack of local government



WHO is CRV-RPO?

Terry Valentine	JC Enterprises Owner	Chair
John Becker	Chamber of Commerce / NAPA Owner	Committee Member
Martin Boniek	Copper Valley Air Service Owner	Committee Member
Michael Deegan	WM State Director	Committee Member-At-Large
Jerry Lesemann	Crowley Glennallen Manager	Committee Member
Dennis McGlothin	Triple D Enterprises Inc.	CVDA Committee Designated Seat Member
Brett Nelson	DOT&PF Planner	DOT&PF Committee Designated Seat Member (non-voting)
Jason Hoke	CVDA Executive Director	Committee Manager (non-voting)



WHERE is CRV-RPO?

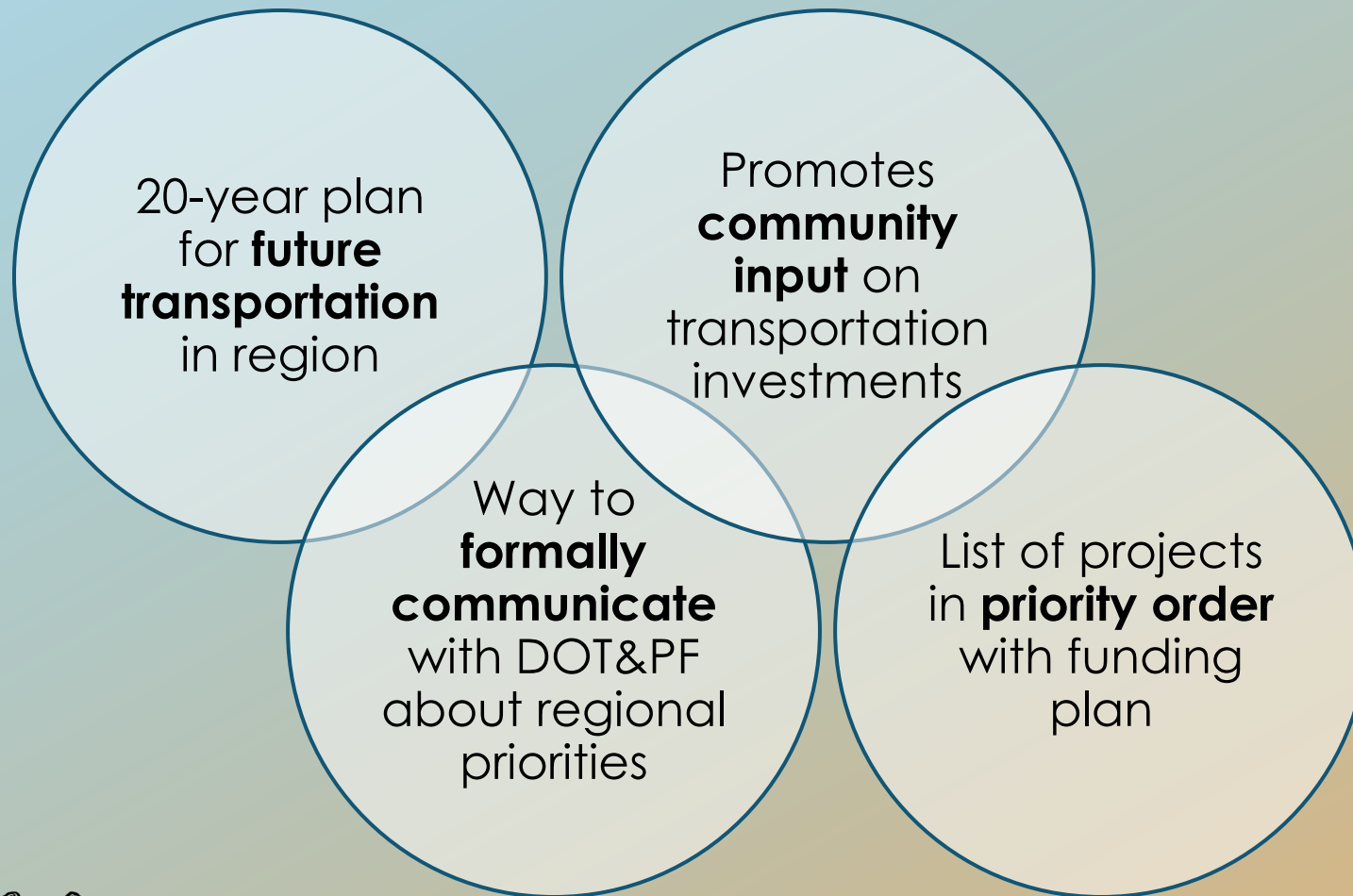


CRV-RPO is responsible
for developing...

The Copper Valley Long-Range Transportation Plan



Long-Range Transportation Plan (LRTP)



CRV-RPO LRTP is...



High-level



A starting point



**Looking 20 years
into the future**

LRTP is not...

- X** Prescriptive
- X** Too detailed
- X** Set in stone



The Copper Valley Plan "LRTP" will include...

Project Area &
Background



Community
Involvement



Vision & Goals



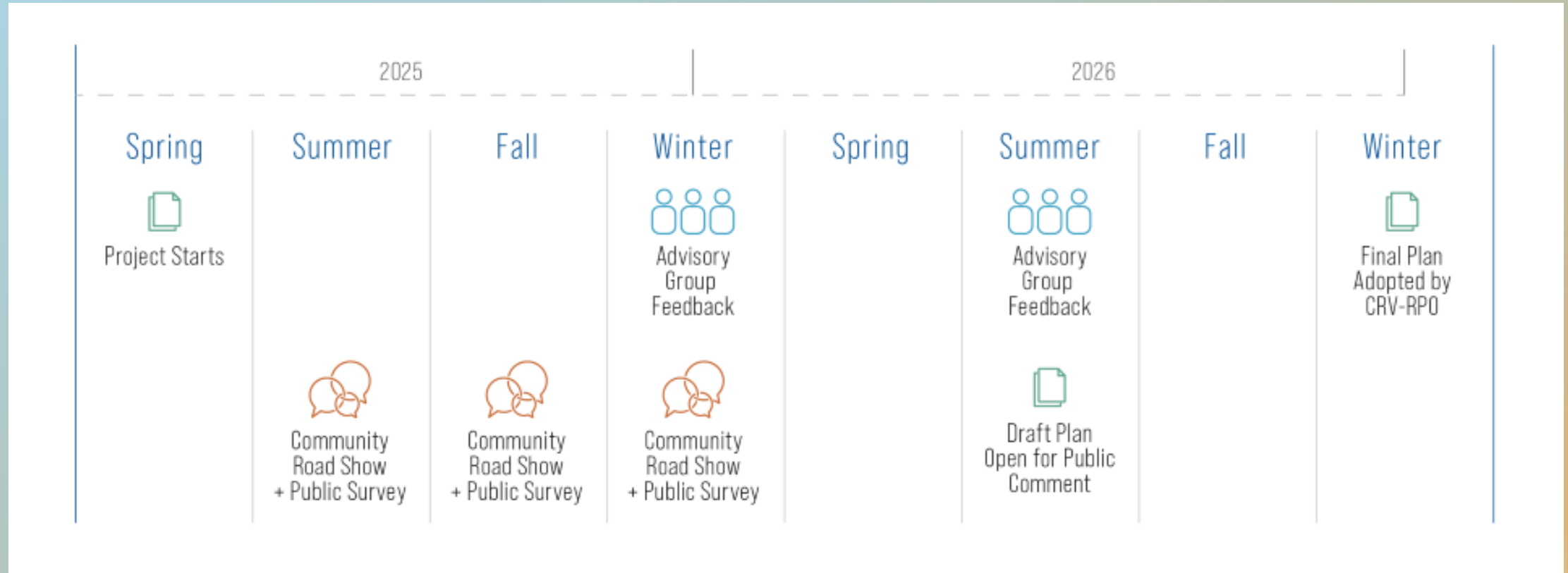
Transportation
Needs



Funding &
implementation



Copper Valley LRTP Schedule



Related Plans & Studies

Alaska Long-Range Transportation Plan

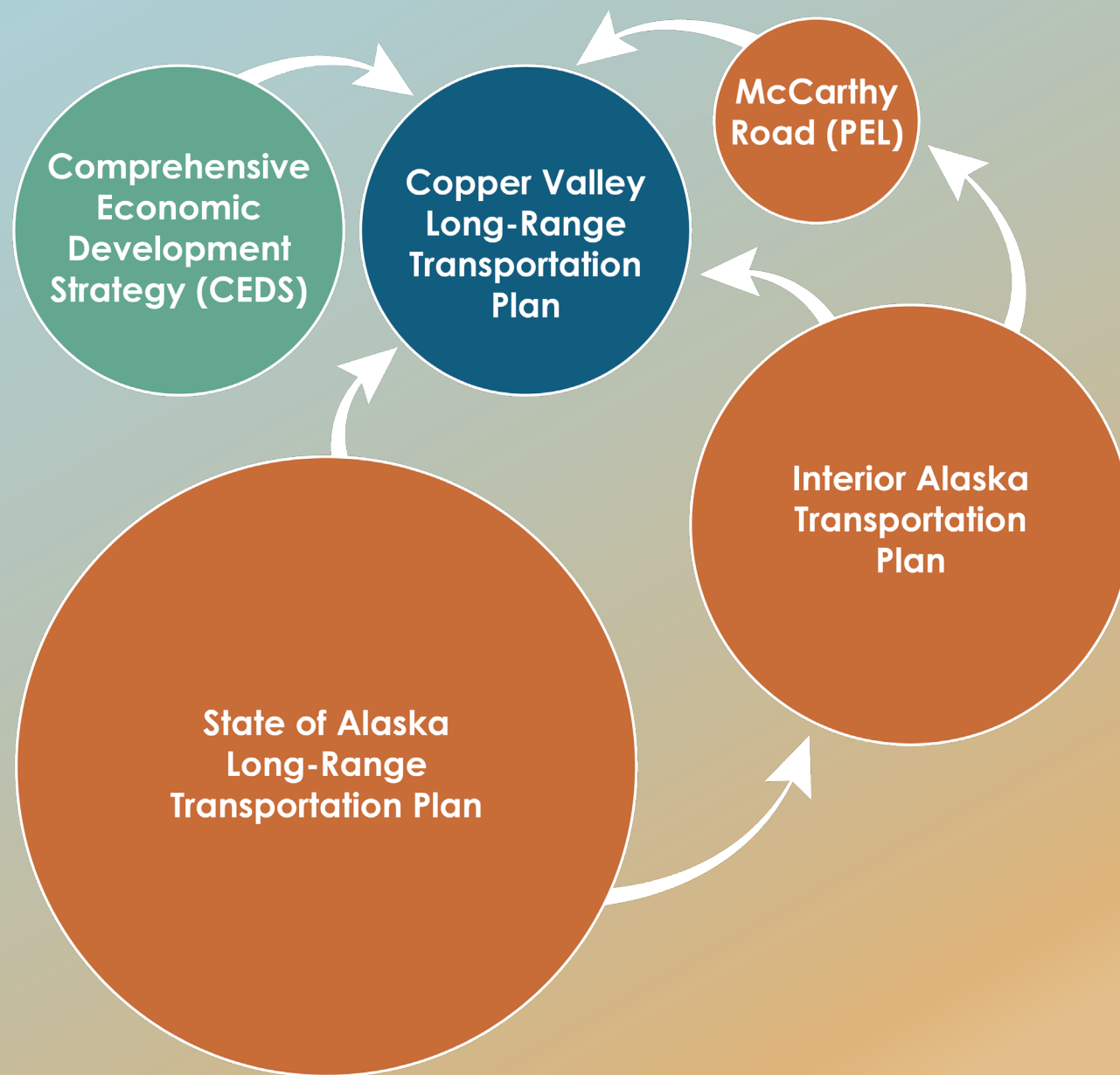
Interior Alaska Transportation Plan

Copper River Census Area Comprehensive
Economic Development Strategy (CEDS)

McCarthy Road Planning and Environmental
Linkages (PEL) Study



How do they fit together?



Alaska Statewide Long-Range Transportation Plan



DOT&PF began development in August 2025



Provides guidance on transportation investment and policies through 2055



CRV-RPO will provide input during the planning process

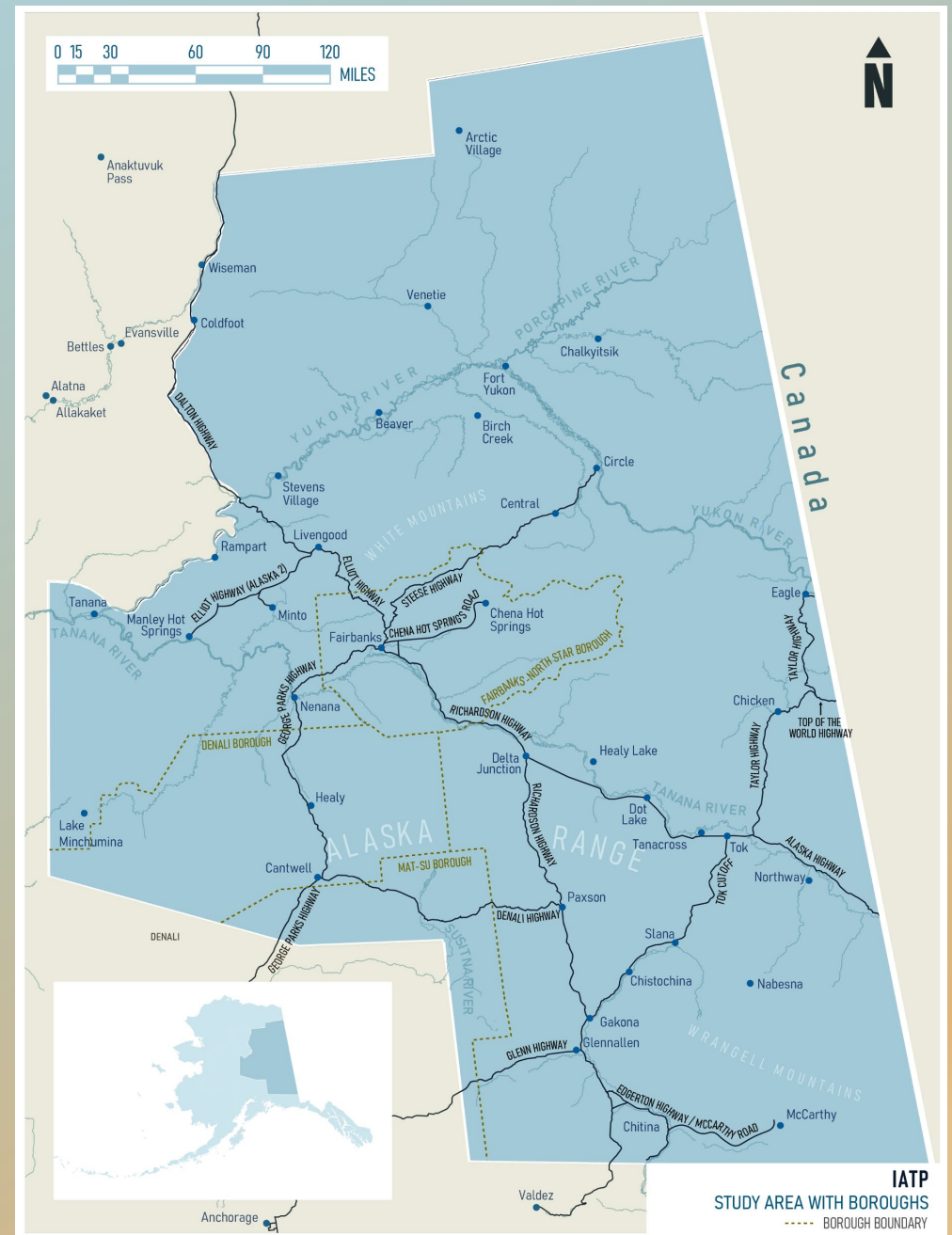


Interior Alaska Transportation Plan

Twenty-year plan (2025-2045)

IATP Goals

- Support economic vitality
- Health, safety, and security
- Accessibility and mobility for people and freight
- Preserve and enhance the existing transportation system
- Intermodal connectivity



Interior Alaska Transportation Plan

Identified High Interest Needs Specific to Copper Valley

Improve the existing infrastructure and increase safety on the **Richardson Highway** as identified in the Richardson Highway PEL Study.

Drainage and roadway surface improvements on **McCarthy Road**.

Culvert improvements on **Nabesna Road** to assist in the mitigation of washouts.

Conduct rights-of-way corrections on **McCarthy Road**.

Realignment of **McCarthy Road** at Kotsina Bluffs.

Gulkana Airport – Includes needs identified for funding in the Alaska Aviation System Plan (AASP) such as pavement markings, crack sealing and replacement of snow removal equipment. Additional identified needs, not programmed for funding, include construction of new apron, installation of Continuously Operating Reference Stations, toilet facilities, and the construction of tie-downs.



Copper River Census Area Comprehensive Economic Development Strategy (CEDS)

Five-year plan (2024-2029)

Gulkana Airport Layout Plan

- Regional emergency services hangar
- Extend the runway
- Build a float pond
- Construct lease lots (aviation & non-aviation)

Additional Transportation Objectives

- Develop waysides and rest areas with toilet facilities



McCarthy Road Planning and Environmental Linkages (PEL) Study

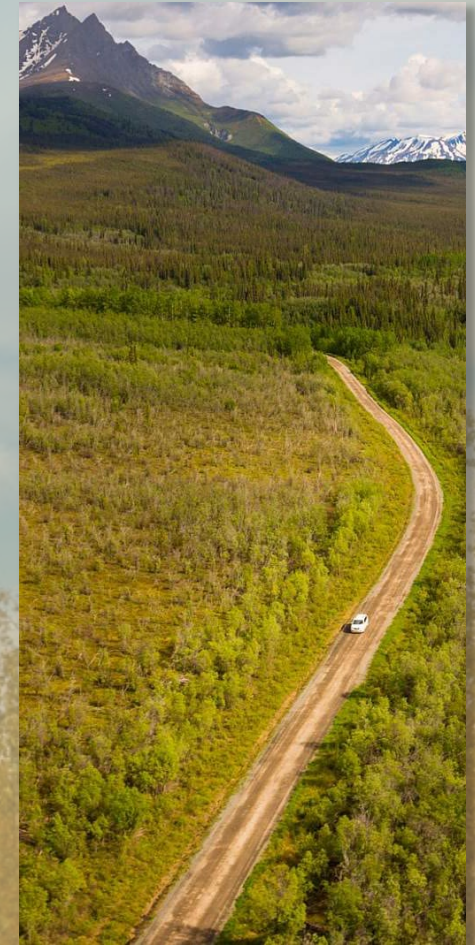
Final PEL Study Report released in September 2025

Primary Goals

- Provide a safe road corridor
- Maintain reliable access

Recommended solutions from this study fell into seven categories:

- Drainage Improvements
- Road rehabilitation
- Road reconstruction
- Bridge improvements
- Pullouts
- Erosion Control
- Localized culvert improvements



We want to hear from you!





What is the biggest transportation challenge you face today?

1. Distance to emergency services
2. Lack of pedestrian/bicycle infrastructure
3. Inadequate access points to subsistence areas
4. Not enough highway pullouts and rest areas
5. Poor road conditions (e.g., potholes, frost heaves)
6. Other (please type in the chat)





What is the number one transportation project you would like to see prioritized?

1. More highway rest areas and pullouts
2. Improved airports and landing strips
3. Expanded ATV/snowmachine trails
4. New roads
5. Increased maintenance on existing roads
6. New pedestrian/bicycle facilities
7. Increased recreation access
8. Other (please type in the chat)



What you can do now

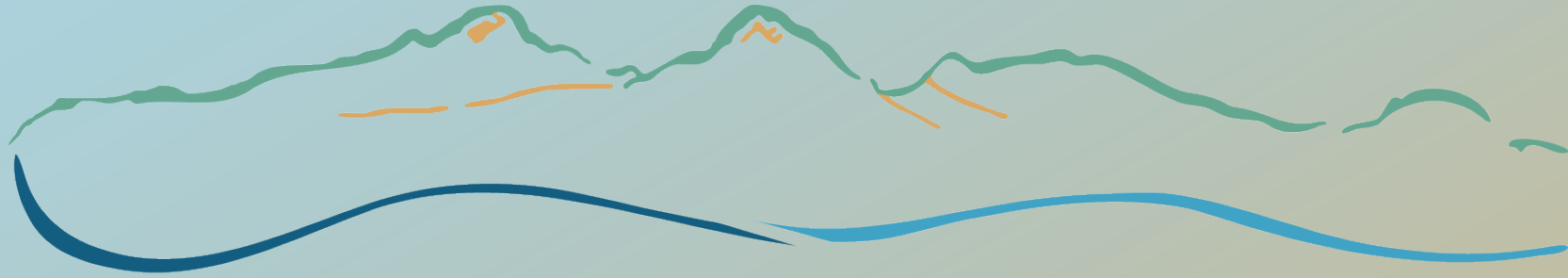
- **Community survey:** Take the survey! Tell your friends!
- **Email list:** Sign up at coppervalley.org/transportation/lrtp
- **Facebook + Instagram:** Follow and share!



Follow us on Facebook!



Questions?



COPPER VALLEY DEVELOPMENT ASSOCIATION

Thank you!

